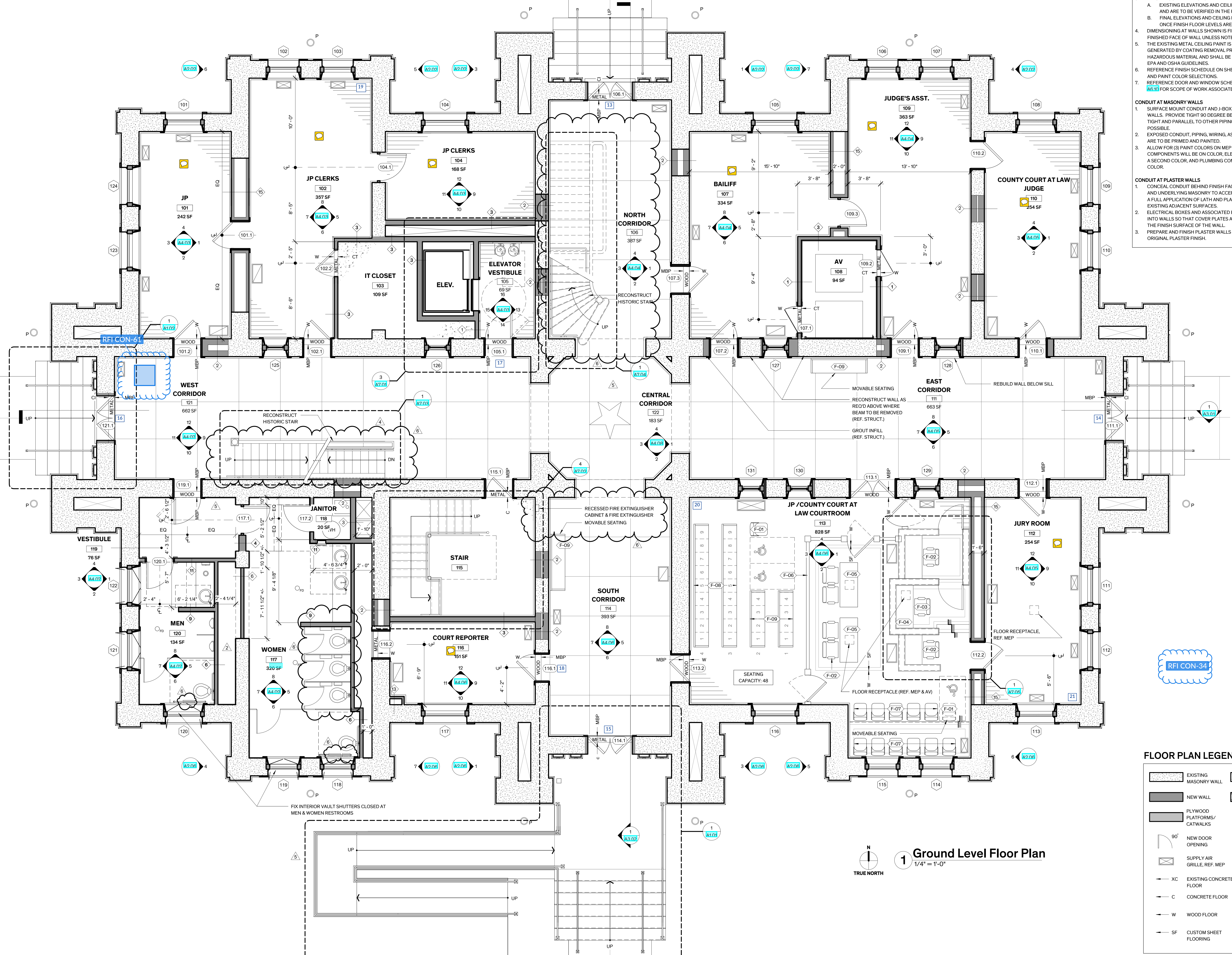


GENERAL NOTES

- GENERAL**
- FINISH EXPOSED SURFACES UNLESS NOTED OTHERWISE. THE CONTRACTOR SHALL ASSUME FULL RESPONSIBILITY FOR THE COORDINATION OF THE COMPLETE FINISH-OUT OF THE PROJECT. ANY SURFACES WHICH DO NOT HAVE A SPECIFIC FINISH NOTED, NOR ARE NOTED TO REMAIN UNFINISHED SHALL BE BROUGHT TO THE ATTENTION OF THE ARCHITECT AND FINISHED PER THE ARCHITECT'S INSTRUCTION.
 - CONTRACTOR TO FIELD VERIFY EXISTING WALL THICKNESS.
 - FINISH FLOOR ELEVATIONS:
 - EXISTING ELEVATIONS AND CEILING HEIGHTS ARE APPROXIMATE AND ARE TO BE VERIFIED IN THE FIELD BY THE CONTRACTOR.
 - FINAL ELEVATIONS AND CEILING HEIGHTS WILL BE DETERMINED ONCE FINISH FLOOR LEVELS ARE ESTABLISHED IN CORRIDORS.
 - DIMENSIONING AT WALLS UNLESS NOTED OTHERWISE. THE EXISTING METAL CEILING PAINT IS KNOWN TO CONTAIN LEAD. WASTE GENERATED BY COATING REMOVAL PROCESS SHALL BE CLASSIFIED AS HAZARDOUS MATERIAL AND SHALL BE REMOVED IN ACCORDANCE WITH EPA AND OSHA GUIDELINES.
 - REFERENCE FINISH SCHEDULE ON SHEET A6.01 FOR ROOM FINISH AND PAINT COLOR SELECTIONS.
 - REFERENCE DOOR AND WINDOW SCHEDULES ON SHEETS A6.04 THRU A6.10 FOR SCOPE OF WORK ASSOCIATED WITH DOORS AND WINDOWS.
- CONDUIT AT MASONRY WALLS**
- SURFACE MOUNT CONDUIT AND J-BOXES PARALLEL TO FLOOR AND WALLS. PROVIDE TIGHT 90 DEGREE BENDS AT CORNERS AND GANG TIGHT AND PARALLEL TO OTHER PIPING AND CONDUIT WHERE POSSIBLE.
 - EXPOSED CONDUIT, PIPING, WIRING, ASSOCIATED FASTENERS, ETC. ARE TO BE PRIMED AND PAINTED.
 - ALLOW FOR (3) PAINT COLORS ON MEP COMPONENTS. MECHANICAL COMPONENTS WILL BE ON COLOR, ELECTRICAL COMPONENTS WILL BE A SECOND COLOR, AND PLUMBING COMPONENTS WILL BE A THIRD COLOR.
- CONDUIT AT PLASTER WALLS**
- CONCEAL CONDUIT BEHIND FINISH FACE OF PLASTER. ROUPE PLASTER AND UNDERLYING MASONRY TO ACCEPT CONDUIT AND TO ALLOW FOR A FULL APPLICATION OF LATH AND PLASTER. PLASTER IS TO MATCH EXISTING ADJACENT SURFACES.
 - ELECTRICAL BOXES AND ASSOCIATED ELEMENTS MUST BE RECESSED INTO WALLS SO THAT COVER PLATES AND DEVICES ARE FLUSH WITH THE FINISH SURFACE OF THE WALL.
 - PREPARE AND FINISH PLASTER WALLS AS REQUIRED TO MATCH ORIGINAL PLASTER FINISH.



1 Ground Level Floor Plan
 1/4" = 1'-0"

FLOOR PLAN LEGEND

	EXISTING MASONRY WALL		CONC. CAP/ CONC. FINISH FLOOR
	NEW WALL		BUILT-UP STONE MASONRY WALL
	PLYWOOD PLATFORMS/ CATWALKS		FURNITURE TAG (REF. FURNISHING SCHEDULE)
	90° NEW DOOR OPENING		45° HISTORIC DOOR OPENING
	SUPPLY AIR GRILLE, REF. MEP		RETURN AIR GRILLE, REF. MEP
	XC EXISTING CONCRETE FLOOR		T TILE FLOOR
	C CONCRETE FLOOR		CI CAST IRON
	W WOOD FLOOR		CT CONCRETE TOPPING
	SF CUSTOM SHEET FLOORING		MBP MORTAR-BASED POLYMER COATING

TEXAS HISTORICAL COMMISSION
real places telling real stories



FANNIN COUNTY COURTHOUSE
 INTERIOR & EXTERIOR RESTORATION

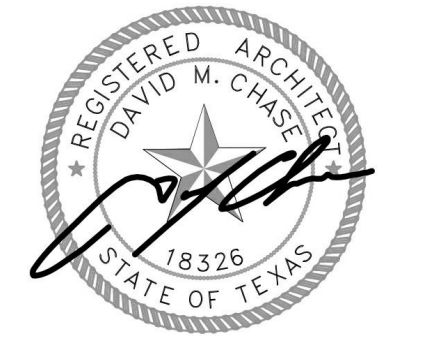
101 E. Sam Rayburn Drive
 Bonham, Texas 75418

COPYRIGHT
 The Contractor shall verify and be responsible for all dimensions. DO NOT scale the drawing. Any errors or omissions shall be reported to Architexas without delay. The copyrights to all designs and drawings are the property of Architexas. Reproduction or use for any purpose other than that authorized by Architexas is forbidden.

REVISION HISTORY

1	9/24/19	PR-01
2	1/08/20	ASI 1
4	3/11/2020	RFI 43
5	3/17/2020	ASI 2
6	5/29/2020	ASI 3

ISSUED FOR CONSTRUCTION



#18326 5/29/20

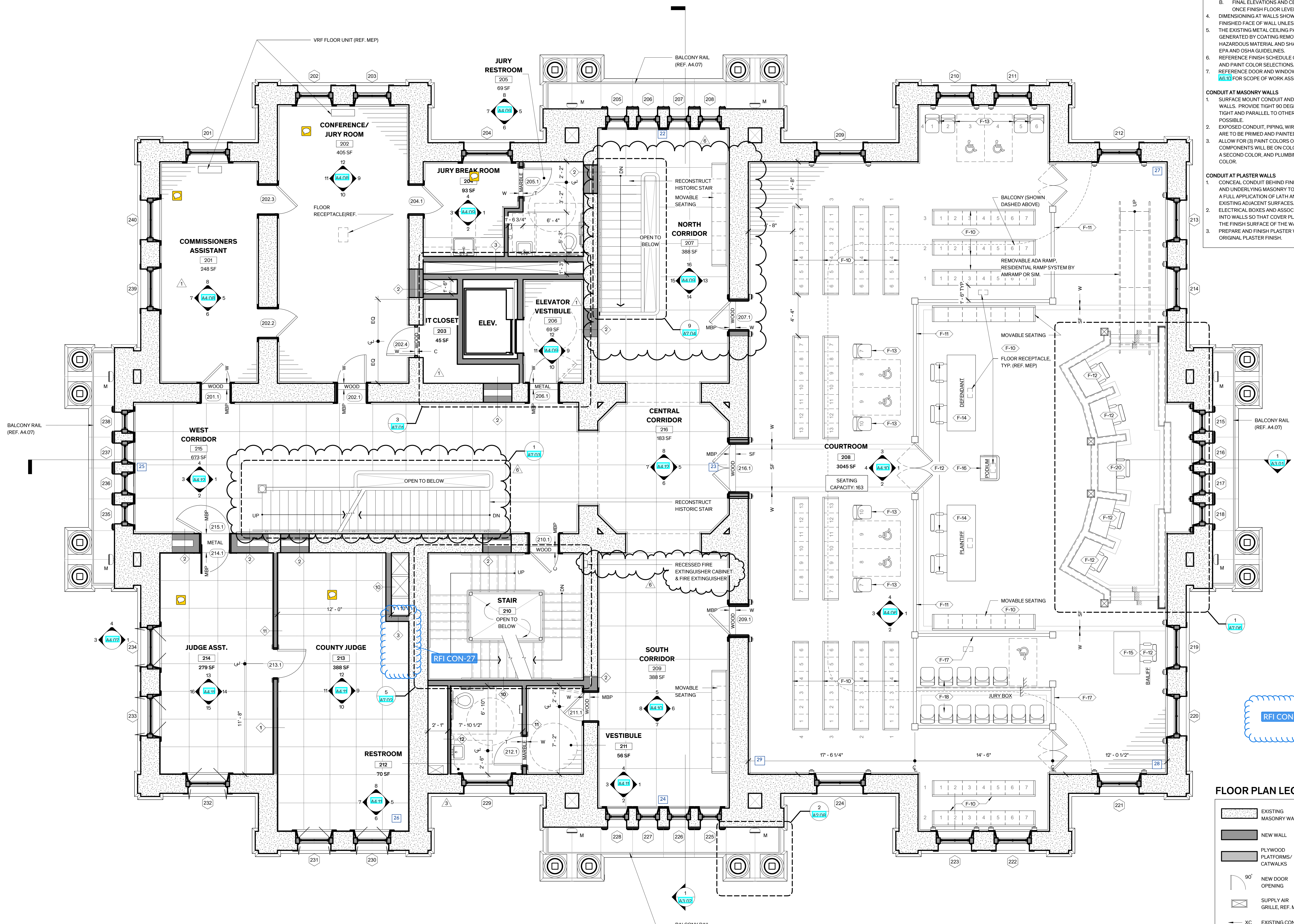
Architexas No. 1737 Date April 22, 2019

Sheet Name GROUND LEVEL FLOOR PLAN

Sheet Number A1.06

GENERAL NOTES

- GENERAL**
- FINISH EXPOSED SURFACES UNLESS NOTED OTHERWISE. THE CONTRACTOR SHALL ASSUME FULL RESPONSIBILITY FOR THE COORDINATION OF THE COMPLETE FINISH-OUT OF THE PROJECT. ANY SURFACES WHICH DO NOT HAVE A SPECIFIC FINISH NOTED, NOR ARE NOTED TO REMAIN UNFINISHED SHALL BE BROUGHT TO THE ATTENTION OF THE ARCHITECT AND FINISHED PER THE ARCHITECT'S INSTRUCTION.
 - CONTRACTOR TO FIELD VERIFY EXISTING WALL THICKNESS.
 - FINISH FLOOR ELEVATIONS:
 - EXISTING ELEVATIONS AND CEILING HEIGHTS ARE APPROXIMATE AND ARE TO BE VERIFIED IN THE FIELD BY THE CONTRACTOR.
 - FINAL ELEVATIONS AND CEILING HEIGHTS WILL BE DETERMINED ONCE FINISH FLOOR LEVELS ARE ESTABLISHED IN CORRIDORS.
 - DIMENSIONING AT WALLS SHOWN IS FINISHED FACE OF WALL TO FINISHED FACE OF WALL UNLESS NOTED OTHERWISE.
 - THE EXISTING METAL CEILING PAINT IS KNOWN TO CONTAIN LEAD. WADE GENERATED BY COATING REMOVAL PROCESS SHALL BE CLASSIFIED AS HAZARDOUS MATERIAL AND SHALL BE REMOVED IN ACCORDANCE WITH EPA AND OSHA GUIDELINES.
 - REFERENCE FINISH SCHEDULE ON SHEET A6.01 FOR ROOM FINISH AND PAINT COLOR SELECTIONS.
 - REFERENCE DOOR AND WINDOW SCHEDULES ON SHEETS A6.04 THRU A6.10 FOR SCOPE OF WORK ASSOCIATED WITH DOORS AND WINDOWS.
- CONDUIT AT MASONRY WALLS**
- SURFACE MOUNT CONDUIT AND J-BOXES PARALLEL TO FLOOR AND WALLS. PROVIDE TIGHT 90 DEGREE BENDS AT CORNERS AND GANG TIGHT AND PARALLEL TO OTHER PIPING AND CONDUIT WHERE POSSIBLE.
 - EXPOSED CONDUIT, PIPING, WIRING, ASSOCIATED FASTENERS, ETC. ARE TO BE PRIMED AND PAINTED.
 - ALLOW FOR (3) PAINT COLORS ON MEP COMPONENTS. MECHANICAL COMPONENTS WILL BE ON COLOR, ELECTRICAL COMPONENTS WILL BE A SECOND COLOR, AND PLUMBING COMPONENTS WILL BE A THIRD COLOR.
- CONDUIT AT PLASTER WALLS**
- CONCRETE CONDUIT BEHIND FINISH FACE OF PLASTER. ROUT PLASTER AND UNDERLYING MASONRY TO ACCEPT CONDUIT AND TO ALLOW FOR A FULL APPLICATION OF LATH AND PLASTER. PLASTER IS TO MATCH EXISTING ADJACENT SURFACES.
 - ELECTRICAL BOXES AND ASSOCIATED ELEMENTS MUST BE RECESSED INTO WALLS SO THAT COVER PLATES AND DEVICES ARE FLUSH WITH THE FINISH SURFACE OF THE WALL.
 - PREPARE AND FINISH PLASTER WALLS AS REQUIRED TO MATCH ORIGINAL PLASTER FINISH.



FLOOR PLAN LEGEND

	EXISTING MASONRY WALL		CONC. CAP/ CONC. FINISH FLOOR
	NEW WALL		BUILT-UP STONE MASONRY WALL
	PLYWOOD PLATFORMS/CATWALKS		FURNITURE TAG (REF. FURNISHING SCHEDULE)
	90° NEW DOOR OPENING		45° HISTORIC DOOR OPENING
	SUPPLY AIR GRILLE, REF. MEP		RETURN AIR GRILLE, REF. MEP
	XC EXISTING CONCRETE FLOOR		T TILE FLOOR
	C CONCRETE FLOOR		CI CAST IRON
	W WOOD FLOOR		CT CONCRETE TOPPING
	SF CUSTOM SHEET FLOORING		MBP MORTAR-BASED POLYMER COATING

1 Second Level Floor Plan
1/4" = 1'-0"

TEXAS HISTORICAL COMMISSION
real places telling real stories



FANNIN COUNTY COURTHOUSE
INTERIOR & EXTERIOR RESTORATION

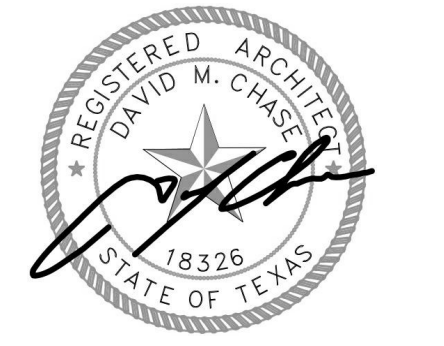
101 E. Sam Rayburn Drive
Bonham, Texas 75418

COPYRIGHT
The Contractor shall verify and be responsible for all dimensions. DO NOT scale the drawing. Any errors or omissions shall be reported to Architexas without delay. The Copyrights to all designs and drawings are the property of Architexas. Reproduction or use for any purpose other than that authorized by Architexas is forbidden.

REVISION HISTORY

1	9/24/19	PR-01
3	1/27/20	RFI 27
5	3/17/2020	ASI 2
6	5/29/2020	ASI 3

ISSUED FOR CONSTRUCTION



#18326 5/29/20

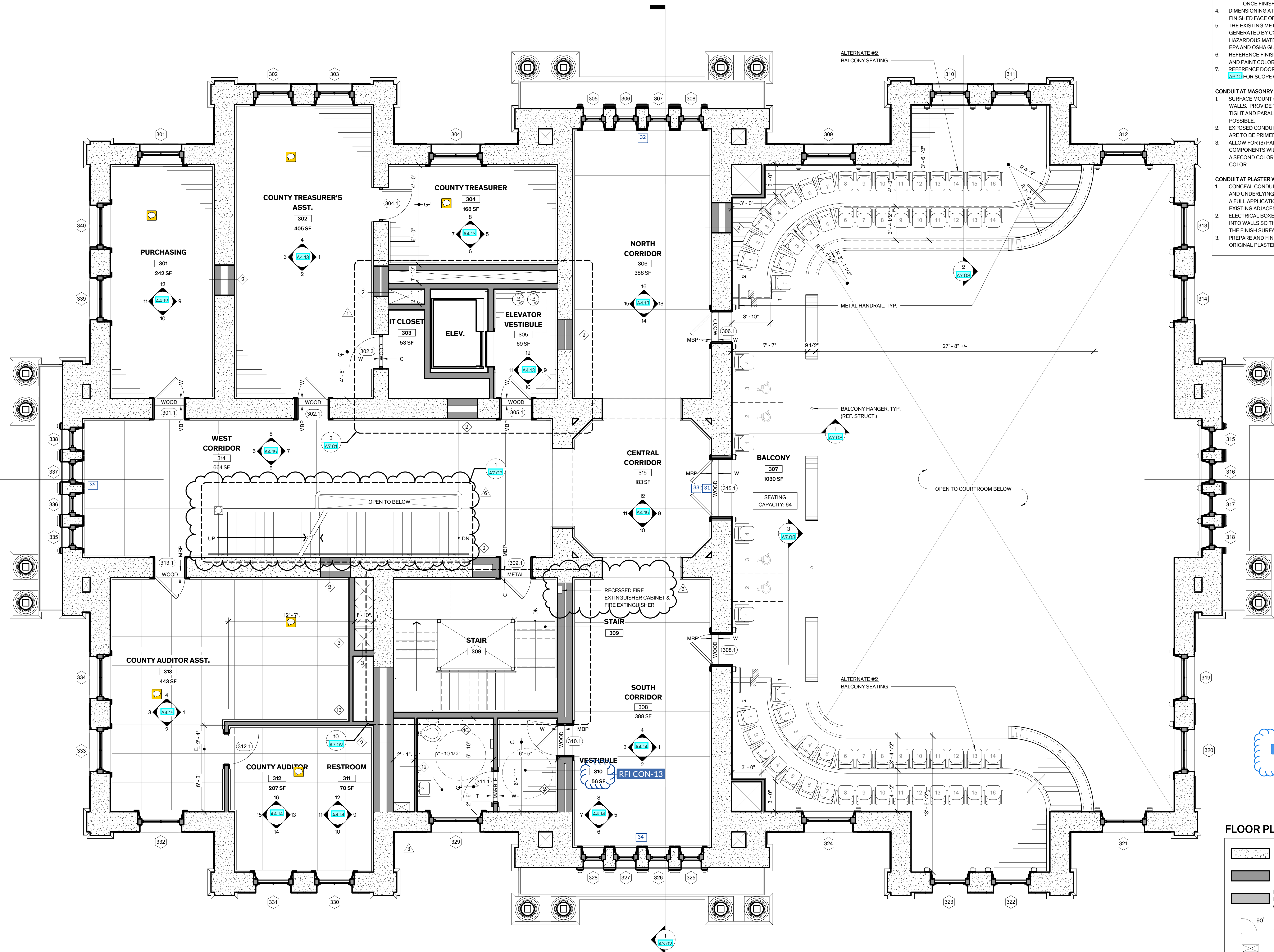
Architexas No. 1737 Date April 22, 2019

Sheet Name SECOND LEVEL FLOOR PLAN

Sheet Number A1.08

GENERAL NOTES

- GENERAL**
- FINISH EXPOSED SURFACES UNLESS NOTED OTHERWISE. THE CONTRACTOR SHALL ASSUME FULL RESPONSIBILITY FOR THE COORDINATION OF THE COMPLETE FINISH-OUT OF THE PROJECT. ANY SURFACES WHICH DO NOT HAVE A SPECIFIC FINISH NOTED, NOR ARE NOTED TO REMAIN UNFINISHED SHALL BE BROUGHT TO THE ATTENTION OF THE ARCHITECT AND FINISHED PER THE ARCHITECT'S INSTRUCTION.
 - CONTRACTOR TO FIELD VERIFY EXISTING WALL THICKNESS.
 - FINISH FLOOR ELEVATIONS:
 - EXISTING ELEVATIONS AND CEILING HEIGHTS ARE APPROXIMATE AND ARE TO BE VERIFIED IN THE FIELD BY THE CONTRACTOR.
 - FINAL ELEVATIONS AND CEILING HEIGHTS WILL BE DETERMINED ONCE FINISH FLOOR LEVELS ARE ESTABLISHED IN CORRIDORS.
 - DIMENSIONING AT WALLS SHOWN IS FINISHED FACE OF WALL TO FINISHED FACE OF WALL UNLESS NOTED OTHERWISE.
 - THE EXISTING METAL CEILING PAINT IS KNOWN TO CONTAIN LEAD. WASTE GENERATED BY COATING REMOVAL PROCESS SHALL BE CLASSIFIED AS HAZARDOUS MATERIAL AND SHALL BE REMOVED IN ACCORDANCE WITH EPA AND OSHA GUIDELINES.
 - REFERENCE FINISH SCHEDULE ON SHEET **A6.03** FOR ROOM FINISH AND PAINT COLOR SELECTIONS.
 - REFERENCE DOOR AND WINDOW SCHEDULES ON SHEETS **A6.04** THRU **A6.10** FOR SCOPE OF WORK ASSOCIATED WITH DOORS AND WINDOWS.
- CONDUIT AT MASONRY WALLS**
- SURFACE MOUNT CONDUIT AND J-BOXES PARALLEL TO FLOOR AND WALLS. PROVIDE TIGHT 90 DEGREE BENDS AT CORNERS AND GANG TIGHT AND PARALLEL TO OTHER PIPING AND CONDUIT WHERE POSSIBLE.
 - EXPOSED CONDUIT, PIPING, WIRING, ASSOCIATED FASTENERS, ETC. ARE TO BE PRIMED AND PAINTED.
 - ALLOW FOR (3) PAINT COLORS ON MEP COMPONENTS. MECHANICAL COMPONENTS WILL BE ON COLOR, ELECTRICAL COMPONENTS WILL BE A SECOND COLOR, AND PLUMBING COMPONENTS WILL BE A THIRD COLOR.
- CONDUIT AT PLASTER WALLS**
- CONCEAL CONDUIT BEHIND FINISH FACE OF PLASTER. ROUT PLASTER AND UNDERLYING MASONRY TO ACCEPT CONDUIT AND TO ALLOW FOR A FULL APPLICATION OF LATH AND PLASTER. PLASTER IS TO MATCH EXISTING ADJACENT SURFACES.
 - ELECTRICAL BOXES AND ASSOCIATED ELEMENTS MUST BE RECESSED INTO WALLS SO THAT COVER PLATES AND DEVICES ARE FLUSH WITH THE FINISH SURFACE OF THE WALL.
 - PREPARE AND FINISH PLASTER WALLS AS REQUIRED TO MATCH ORIGINAL PLASTER FINISH.



1 Third Level Floor Plan
1/4" = 1'-0"

FLOOR PLAN LEGEND

	EXISTING MASONRY WALL		CONC. CAP/ CONC. FINISH FLOOR
	NEW WALL		BUILT-UP STONE MASONRY WALL
	PLYWOOD PLATFORMS/ CATWALKS		FURNITURE TAG (REF. FURNISHING SCHEDULE)
	90° NEW DOOR OPENING		45° HISTORIC DOOR OPENING
	SUPPLY AIR GRILLE, REF. MEP		RETURN AIR GRILLE, REF. MEP
	XC EXISTING CONCRETE FLOOR		T TILE FLOOR
	C CONCRETE FLOOR		CI CAST IRON
	W WOOD FLOOR		CT CONCRETE TOPPING
	SF CUSTOM SHEET FLOORING		MBP MORTAR-BASED POLYMER COATING



FANNIN COUNTY COURTHOUSE
INTERIOR & EXTERIOR RESTORATION

101 E. Sam Rayburn Drive
Bonham, Texas 75418

COPYRIGHT
The Contractor shall verify and be responsible for all dimensions. DO NOT scale the drawing. Any errors or omissions shall be reported to Architexas without delay. The Copyrights to all designs and drawings are the property of Architexas. Reproduction or use for any purpose other than that authorized by Architexas is forbidden.

REVISION HISTORY

1	9/24/19	PR-01
3	1/27/20	RFI 27
6	5/29/2020	ASI 3

ISSUED FOR CONSTRUCTION



Architexas No. 1737 Date April 22, 2019

Sheet Name THIRD LEVEL FLOOR PLAN

Sheet Number AI.10